

Flat Concrete Substrate



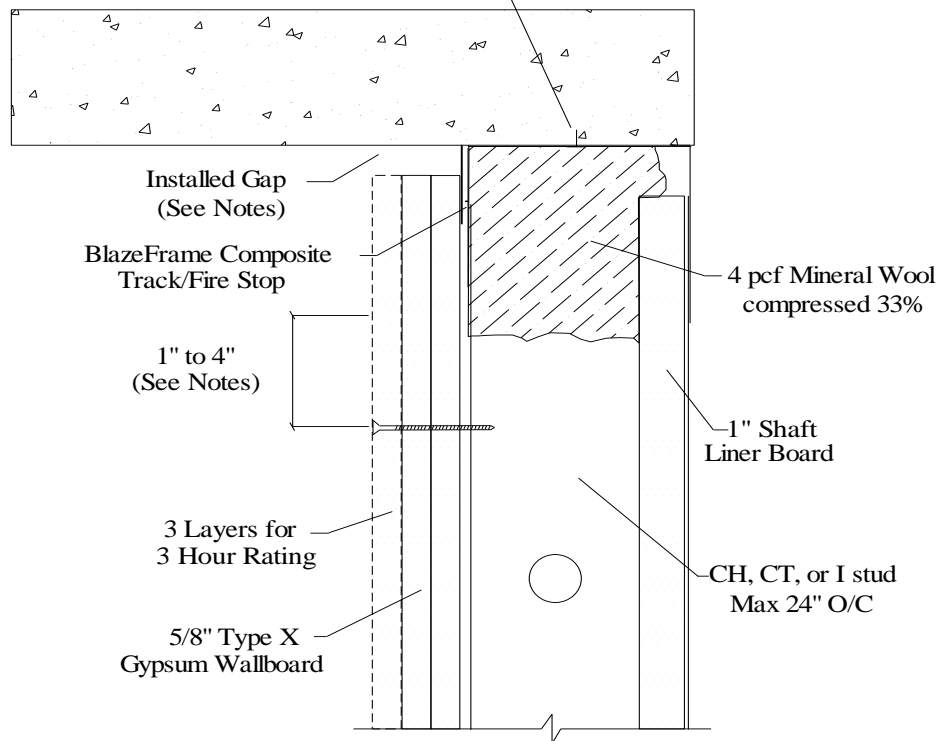
PT3 - Shaft Wall Post Tension or Structural Concrete

Joint Movement Capabilities (MC) / Profile Series refer to UL Listing: [HW-D-0496](#)

3/4" MC - (Stock Series) 1" MC - ("W" Series)

1 1/2" MC - ("X" Series) 2" MC - ("Z" Series)

Fastener Attachment 24" O/C max.



1. Installed Gap (compression only) = movement capability (MC) of profile
2. Installed Gap (compress + extension) = 1/2 movement capability (MC) of profile
3. Attach to substrate with approved fastener max 24" O.C or per E.O.R.
4. Do not screw drywall or stud to BlazeFrame solid leg profile studs "free float"
5. "Slotted" profile metal framing fastener installed center of slot (min. one side only)
6. Drywall fasteners 1" to 4" below BlazeFrame to accommodate MC
7. 1, 2, or 3 hr rating layers of 5/8" (finished side) refer to UL U400 or V400 series designs

UL, ASTM & Code Standards

UL2079, E814, E1966, ULC S115-M95
A1003, A653, A924, C645, C754, C955
AISI 2004 NAS
2006 & 2009 IBC
2007 CBC

Leed Points

MR 2.1 & 2.2 - Construction Waste: up to 2 pts
MR 4.1 & 4.2 - Recycled Content : up to 2 pts
MR 5.1 & 5.2 - Regional Proximity
EQ 4.1 - Low Emitting Materials
EQ 9 - Enhanced Acoustical

Phone: (425) 869-2811 Fax: (425) 869-2300