

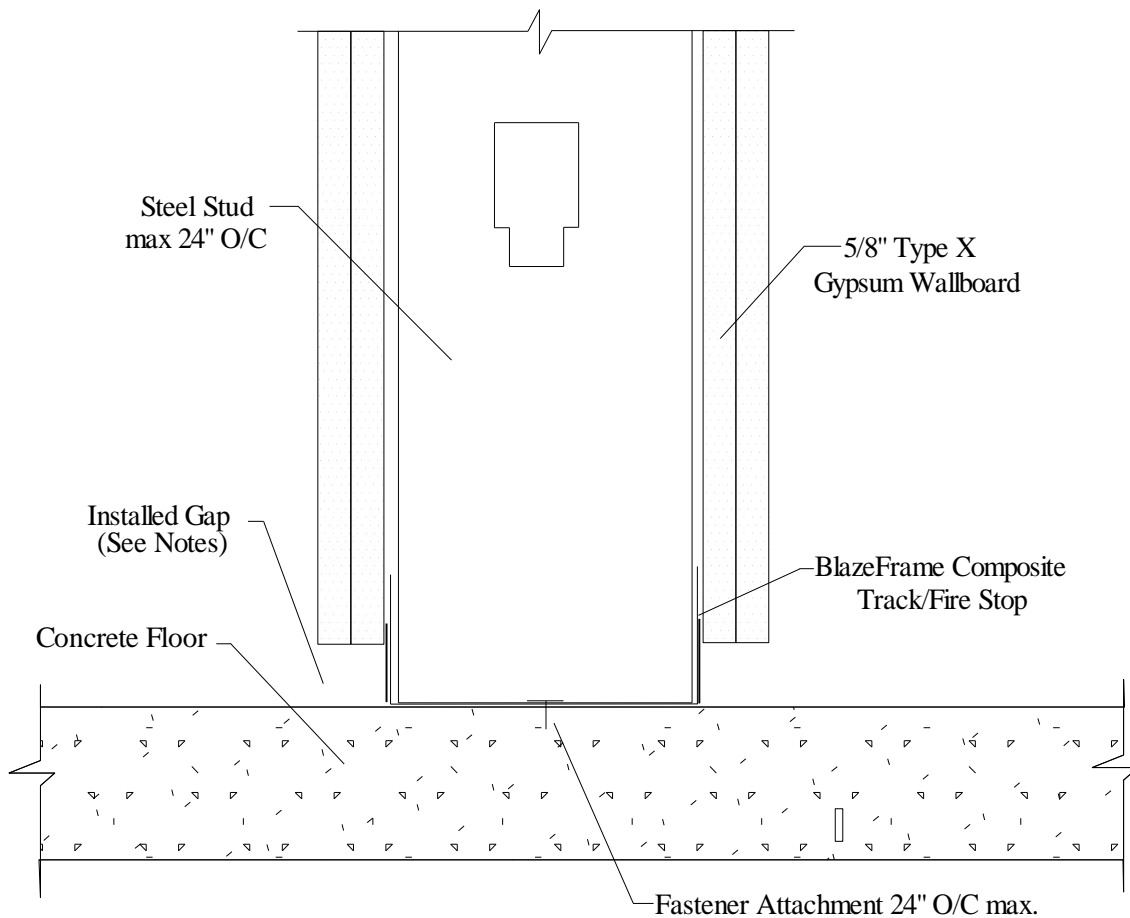
# Flat Concrete Substrate



## PT6 – Bottom of Wall Concrete Floor

Joint Protection Capabilities (JP) / Profile Series based on UL: [BW-S-0021](#)

3/4" MC - (DL)



1. Installed Gap = joint protection (JP) of profile
2. Attach to substrate with approved fastener max 24" O.C or per E.O.R
3. Drywall or stud fastened to BlazeFrame per U400 or V400 certified wall designs

### UL, ASTM & Code Standards

UL2079, E814, E1966, ULC S115-M95  
A1003, A653, A924, C645, C754, C955  
AISI 2004 NAS  
2006 & 2009 IBC  
2007 CBC

### Leed Points

MR 2.1 & 2.2 - Construction Waste: up to 2 pts  
MR 4.1 & 4.2 - Recycled Content : up to 2 pts  
MR 5.1 & 5.2 - Regional Proximity  
EQ 4.1 - Low Emitting Materials  
EQ 9 - Enhanced Acoustical

Phone: (425) 869-2811 Fax: (425) 869-2300