

Structural Support "Beams"

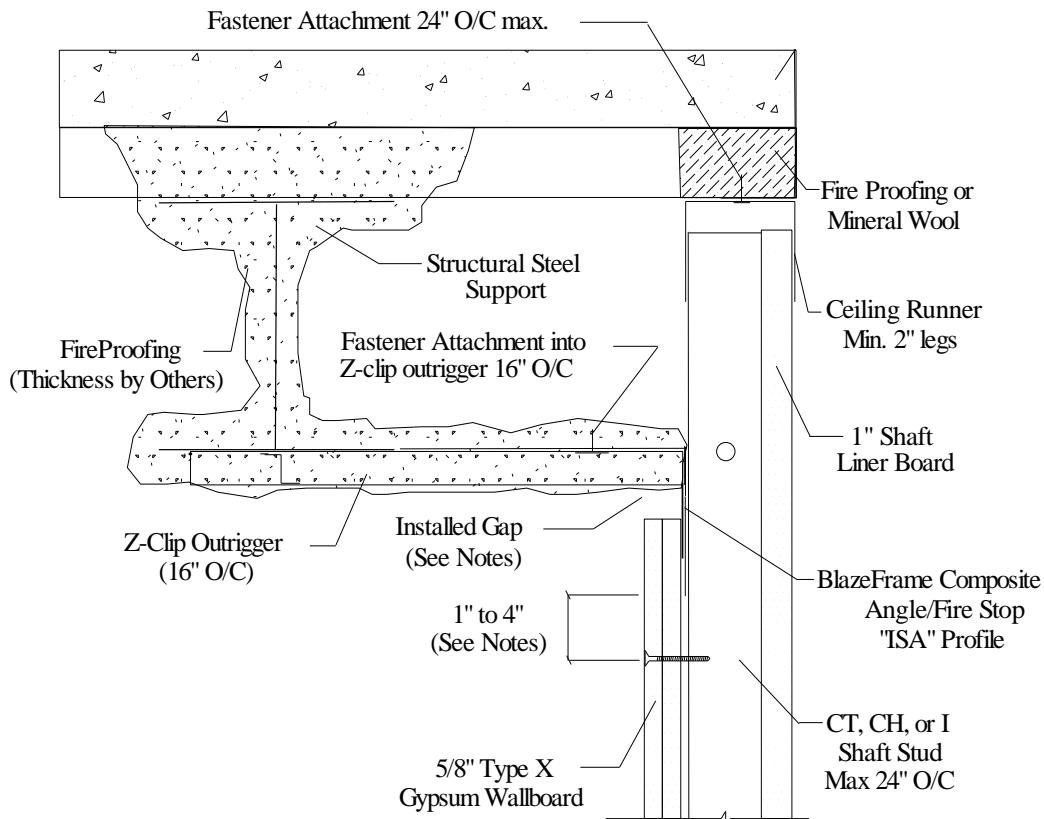


SS8 - Shaft Wall (Full Height) Parallel to Beam (Inside Angle)

Joint Movement Capabilities (MC) / Profile Series refer to UL Listing: [HW-D-0497](#)

3/4" MC - (Stock Series) 1" MC - ("W" Series) 1 1/2" MC - ("X" Series)

2" MC - ("Z" Series) 3" MC - ("Y" Series)



1. Installed Gap (compression only) = movement capability (MC) of profile
2. Installed Gap (compress + extension) = 1/2 movement capability (MC) of profile
3. Z-clip outrigger max 16" O/C with approved fasteners or per E.O.R.
4. Do not screw drywall or stud to BlazeFrame solid leg profile studs "free float"
5. "Slotted" profile metal framing fastener installed center of slot (if used)
6. Drywall fasteners 1" to 4" below BlazeFrame to accommodate MC

UL, ASTM & Code Standards

UL2079, E814, E1966, ULC S115-M95
 A1003, A653, A924, C645, C754, C955
 AISI 2004 NAS
 2006 & 2009 IBC
 2007 CBC

Leed Points

MR 2.1 & 2.2 - Construction Waste: up to 2 pts
 MR 4.1 & 4.2 - Recycled Content : up to 2 pts
 MR 5.1 & 5.2 - Regional Proximity
 EQ 4.1 - Low Emitting Materials
 EQ 9 - Enhanced Acoustical

Phone: (425) 869-2811 Fax: (425) 869-2300