

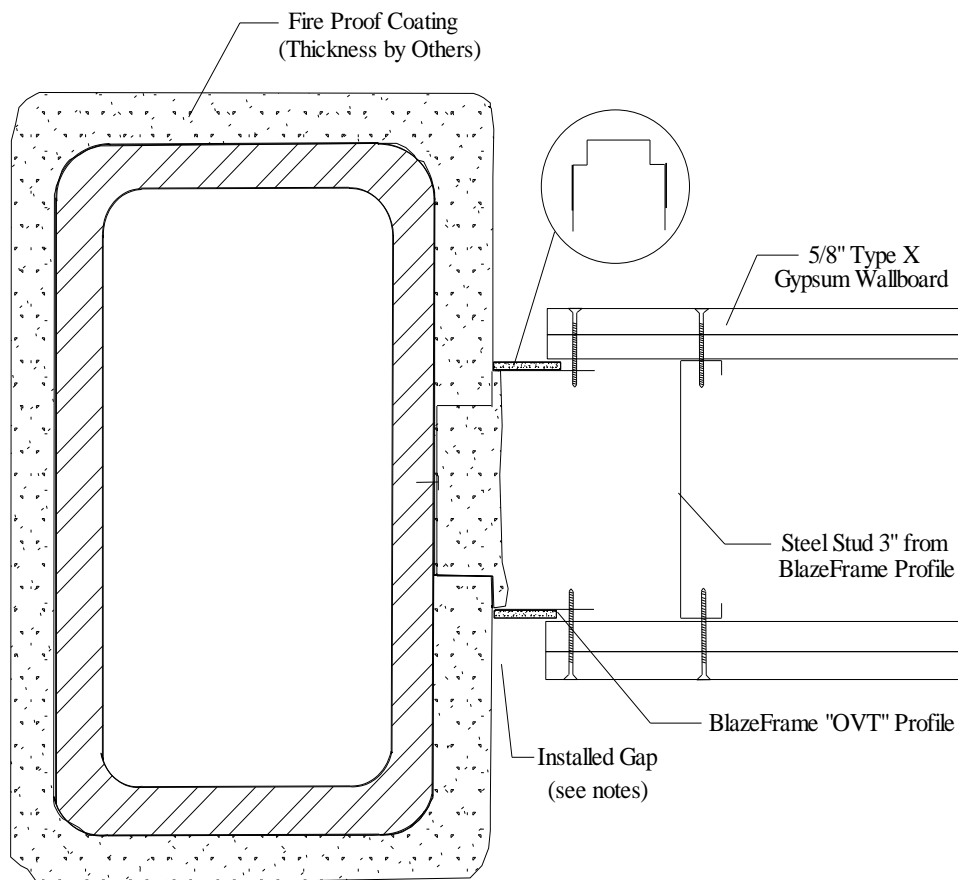
Vertical & Miscellaneous



VM4 - Wall to Wall (Gypsum to Protected Steel "HSS" Column)

Joint Protection (JP) / Profile Series design based on UL Listing: [WW-S-0055](#) & [HW-D-0558](#)

3/4" JP - (Stock Series)



1. Installed Gap = joint protection (JP) of profile
2. Attach to substrate with approved fastener max 24" O/C or per E.O.R.
3. Do not screw stud to BlazeFrame profile
4. Drywall fastened to BlazeFrame profile per U400 or V400 UL certified wall designs

UL, ASTM & Code Standards

UL2079, E814, E1966, ULC S115-M95
A1003, A653, A924, C645, C754, C955
AISI 2004 NAS
2006 & 2009 IBC
2007 CBC

Leed Points

MR 2.1 & 2.2 - Construction Waste: up to 2 pts
MR 4.1 & 4.2 - Recycled Content : up to 2 pts
MR 5.1 & 5.2 - Regional Proximity
EQ 4.1 - Low Emitting Materials
EQ 9 - Enhanced Acoustical

Phone: (425) 869-2811 Fax: (425) 869-2300